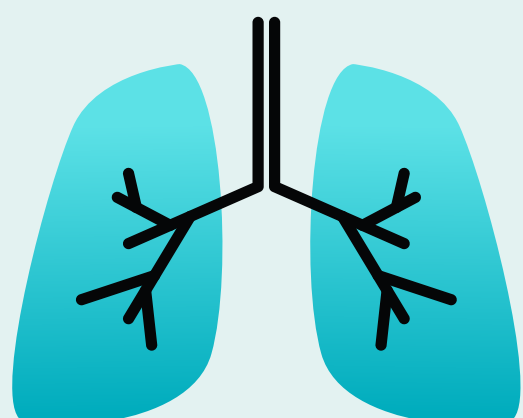


Covid-19 Substance Use Warning

*The risks and barriers faced
by those who use opioids and
methamphetamines.*

Risk.

Those using opioids and meth may be more vulnerable due to their effects on respiratory and pulmonary health.



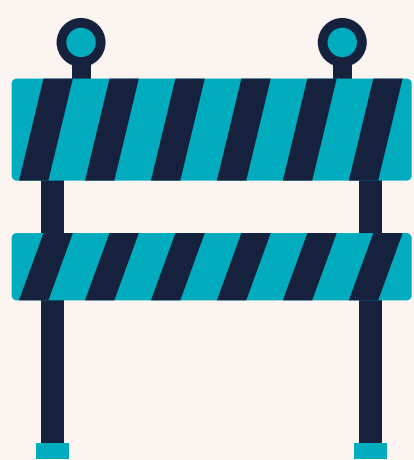
Smoking.

COVID-19 can be a particularly serious threat to those who smoke cigarettes, marijuana, or vape.



Barriers.

There may also be significant barriers to getting healthcare.



Access.

Self-quarantine and other public health measures may disrupt access to MAT and other support needed by individuals with SUD.



Homelessness.

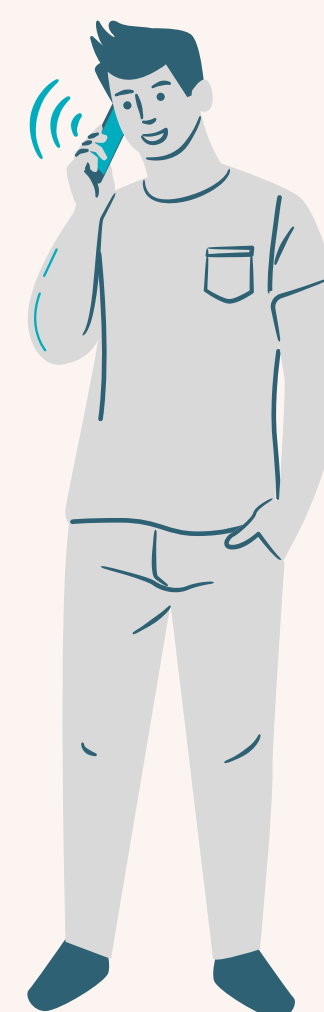
Those with SUDs are more likely to be homeless which creates unique challenges regarding virus transmission.



Help.

For telehealth MAT and other behavioral health resources, visit our website at:

fletchergroup.org



Stigma.

We must ensure that individuals with SUD are not discriminated against when and if a rise in COVID-19 creates additional burdens on our healthcare system.



Source: Lori Baier, Director of Employment Services, The Fletcher Group

fletchergroup.org

This publication is supported by the Health Resources and Services Administration (HRSA) of the U.S. Department of Health and Human Services (HHS) as part of an award totaling \$10.4 million. The contents are those of the author(s) and do not necessarily represent the official views of, nor an endorsement, by HRSA, HHS or the U.S. Government.