



Fletcher Group Partner Success Story

WICAP

PAGE 1

OFF TO A PROMISING START

Led by the Western Idaho Community Action Partnership, a task force of rural healthcare providers and non-profits in Payette, Idaho is taking the first steps toward developing recovery housing for the homeless and addicted in southwest Idaho.

“The Fletcher group has been extremely helpful,” says WICAP Executive Director Heidi Caldwell. “Their team has been instrumental in helping us understand how recovery housing can be planned, developed, built, and sustained here in Payette County.”



FILLING THE GAPS

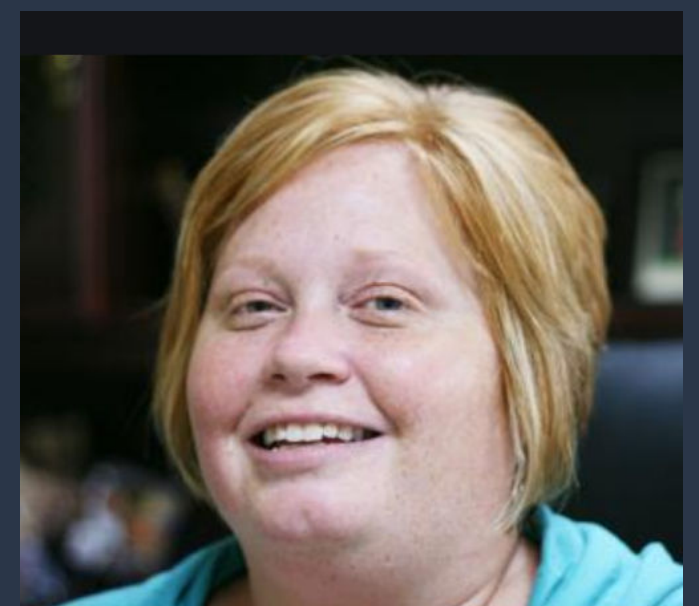
The complexities of Recovery Housing can at times be daunting, says Caldwell. “We had several crucial gaps in knowledge that the Fletcher Group has helped us with. For example: how to build local community support, how to gain state buy-in, and how to leverage the funding sources needed to build recovery housing that’s financially feasible and sustainable.”

A PROVEN MODEL

After lengthy preliminary work, Fletcher Group Founder Ernie Fletcher and CEO Dave Johnson flew to Idaho to meet the task force and describe the Recovery Kentucky model that Fletcher launched when governor. That program now encompasses 18 self-sustaining facilities that have helped thousands of people rebuild their lives while saving millions of taxpayer dollars.

ABOUT WICAP

Headed by Executive Director Heidi Caldwell, the Western Idaho Community Action Partnership has been helping the disadvantaged in southwestern Idaho for over half a century. Like other non-profit CAPs, WICAP is not a federal program, but uses federal money to implement employment, housing, and education projects that help low-income individuals and families. Over the years, WICAP has provided energy assistance to 35,874 people, nutrition assistance to another 73,000, and emergency assistance to over 53,000.





Fletcher Group Partner Success Story

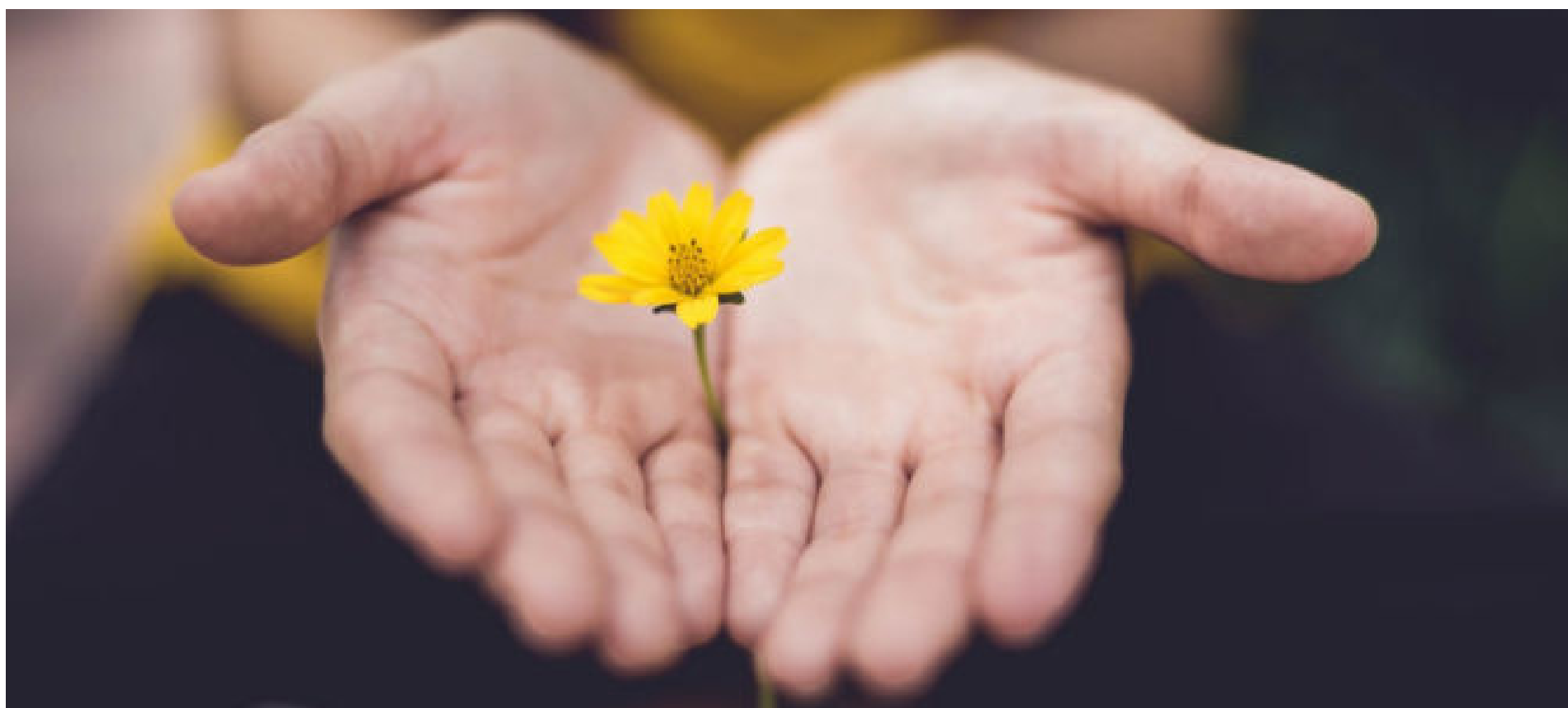
WICAP

PAGE 2

KEY TAKE-AWAYS

Funded by a HRSA grant, the Fletcher Group Rural Center of Excellence is providing WICAP with a wide range of Technical Assistance. The key take-aways, so far, are as follows.

"We have a much better understanding of the role recovery housing plays in the total system of care needed for wellness and recovery," says Caldwell. "Another key insight is that recovery housing is a bipartisan issue. The data showing its importance to recovery is simply too strong for anyone to ignore."



FAMILIARITY

There's a lot of work ahead," says Caldwell. "But the Fletcher Group has been there before. They're familiar with the whole process, including the obstacles, and will continue to be our go-to source for information, advice, and assistance as we work to realize this very exciting project."

ENDORSEMENT

"We would whole-heartedly recommend the Fletcher Group to others," says Caldwell. "We're just getting started, but have already learned so much. We see this as a very close, on-going collaboration from which we hope to learn everything needed to make this a success."

WHAT'S IT LIKE TO WORK WITH US?

"Dave and Ernie and their entire team have been great," says Caldwell. "Every time we've met or reached out to them, they've responded very quickly and proactively."

"So, yes, we'll continue working with them, most definitely. Their expertise is invaluable as we move forward on this very important project for our community."

