



Fletcher Group Partner Success Story

A BETTER FOUNDATION

PAGE 1

EVEN THE BEST NEED HELP

New Foundations, a nonprofit transitional housing provider with 11 facilities serving rural communities in Ohio and Kentucky, provides fully furnished move-in-ready sober living options for those in recovery. Known for its size, level of support, and emphasis on accountability, New Foundations nevertheless needed help. "I'd go to different houses and see them run completely differently," says Executive Director Mikella Chrisman. "It became clear to me that every house we operated had to offer the same practices, standards, values, and quality."

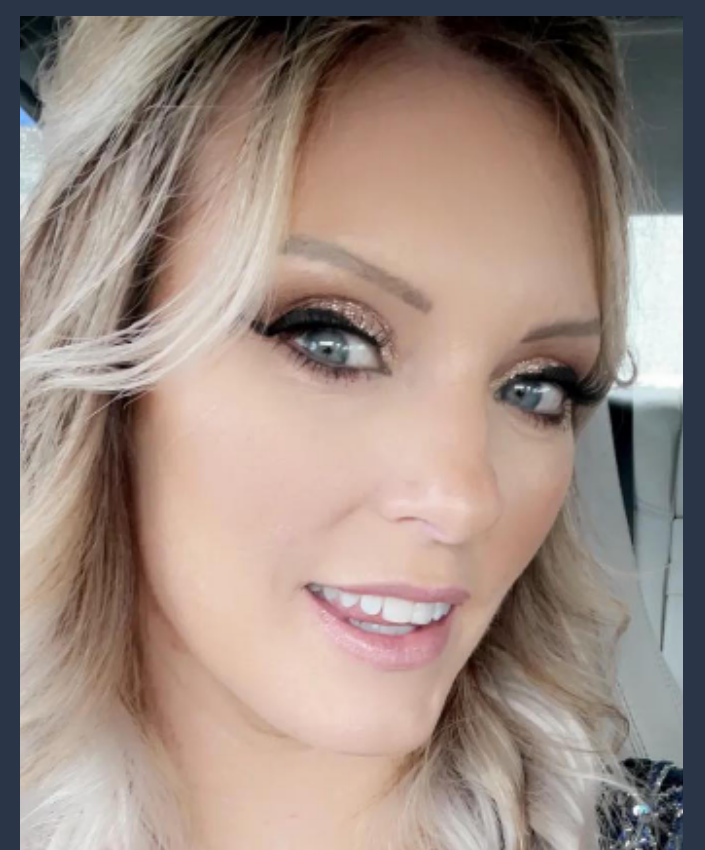


EVERYTHING AND MORE

"I do a lot of research looking for resources," says Chrisman. "That's how I found Gene, Erica, and the Fletcher Group." Gene is Fletcher Group Outreach and Engagement Specialist Gene Detherage who began the collaboration by reviewing the entire New Foundations operation, from financials to daily management—something Chrisman simply didn't have the time to do. "I was blown away by how eager and helpful he was," says Chrisman. Another Fletcher Group OES, Erica Walker, then helped set up a weekly training regimen for house managers taught by Fletcher Group National Outreach and Engagement Specialist Tony White. His emphasis on peer support, environment management, and culture development was complemented by additional training in SMART Recovery Life Skills by Fletcher Group partner Ron Vaughn of Smart Recovery. Fletcher Group CEO Dave Johnson also contributed by gathering data to assist in documenting outcomes.

NO ULTERIOR MOTIVE

"It's been wonderful working with the Fletcher Group," says New Foundations Executive Director Mikella Chrisman. "Gene, my first contact, was just so forthcoming and spent so much time going over everything with me. And then Erica, who's become one of my favorite people, is just so invested in all that we do. The beauty of the Fletcher Group is there's no ulterior motive. No matter who you are or what kind of housing you offer, their only goal is to make it the highest quality possible."





Fletcher Group Partner Success Story

A BETTER FOUNDATION

PAGE 2

A KNACK FOR LEADERSHIP

Chrisman embraces innovation. A New Foundations residence was Ohio's first to offer FDA-approved medications for treating people with SUD. "Suddenly all these other places started offering it," says Chrisman. "And, even though we took a lot of heat for it, I'm proud that we led the way. There are just so many people who need it." Chrisman notes, however, that New Foundations offers traditional non-MAT homes for those who don't want it or prefer injectable forms of medication, such as Vivitrol.



PASSION IS THE FOUNDATION

So what makes people like New Foundations Executive Director Mikella Chrisman and Community Outreach Manager Amy Parker work 80 hours a week? "It's seeing the lives that are changed every day," says Chrisman, "Not everyone is grateful, but there are many people that do thank us for saving their lives. And that, to me, is just incredible. It's an amazing feeling and that's what keeps me going."

"It's the same thing that drives Gene and Erica and Tony at the Fletcher Group" says Parker. "That's what binds us together—the passion to make a difference."

THE REAL STORY

New Foundations Community Outreach Manager Amy Parker has told her courageous recovery story on the Dr. Phil TV show and elsewhere. But the bigger story is her role in supporting the transformation of New Foundations from a struggling organization into a leader. "Recovery Housing is more than boots on the ground and a roof overhead," says Parker. "The Fletcher Group knows that and it's one of the many reasons we've worked so successfully together."

