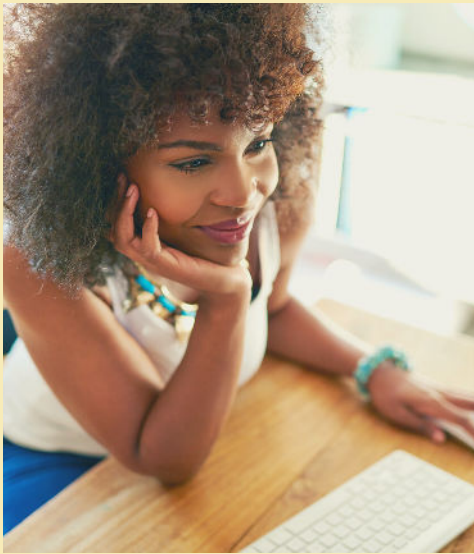


# RECOVERY

*The official newsletter of the  
Fletcher Group Rural Center Of Excellence*



**YOU'RE ONLY AS  
GOOD AS YOUR TOOLS**

**2**

**YOUR NEW STATE  
RESOURCES TOOL**

**3**

**YOUR NEW COUNTY  
ASSESSMENT TOOL**

**4**

## NEW TOOLS FOR A NEW ERA

*by Founder and Chief Medical Officer Dr. Ernie Fletcher*

Whether you're a business offering a product or a non-profit providing a service, the measure of success is the same: Does it improve people's lives? That's a question we ask constantly at the Fletcher Group. And though it seems a simple question, answering it requires an extraordinary degree of empathy and passion—empathy to understand the real needs of others and passion to see it through to success.

Two examples appear in this newsletter. Page 3 describes the new State Resources Tool on our website. By clicking on an interactive map, you can view funding opportunities in your state, including opioid settlement monies. Page 4 describes our new County Assessment Tool that uses a similar interactive map to show the recovery ecosystem resources in every county in America.

These high-tech, science-based tools are just what our industry has been missing. So please give them a try and spread the word!



**Use the right tool for the job.**

## YOU'RE ONLY AS GOOD AS YOUR TOOLS

Having the right tool means working faster and more efficiently with fewer mistakes. But those working in our field—what might loosely be called the recovery industry—have long been handicapped by a lack of modern tools and science-based data.

For example, if you're trying to start a new recovery home in a rural community, where do you look for help? Before now, you were mostly on your own, doing your best but sensing that, without a playbook, you were likely wasting considerable time and energy.

### Tools and Progress Go Hand-In-Hand

Tools were essential to the advance of ancient humans, allowing them to do the previously unimaginable. The same is true today. Having the right tool can be the difference between success and failure, thus the old saying, "You're only as good as your tools."

### Efficiency Benefits

Without the right tool, we have no choice but to make do with what we have. But the result can be costly. The right tool, on the other hand, frees you and your team to focus on getting the job done right without impediments or wasted effort.

### Safety Benefits

The wrong tool at a worksite can lead to serious injuries. Though a recovery home might seem to be a very different place, the lack of good tools and best practices can lead to events just as injurious, as when a resident re-uses due to the lack of proper treatments and services.

### Economic Benefits

The right tool is equally important to the bottom line of recovery houses and recovery programs. Wasted opportunities that harm your organization's reputation can reduce the financial and other support you need from your local community.

### Two Exciting New Tools Made Just For You!

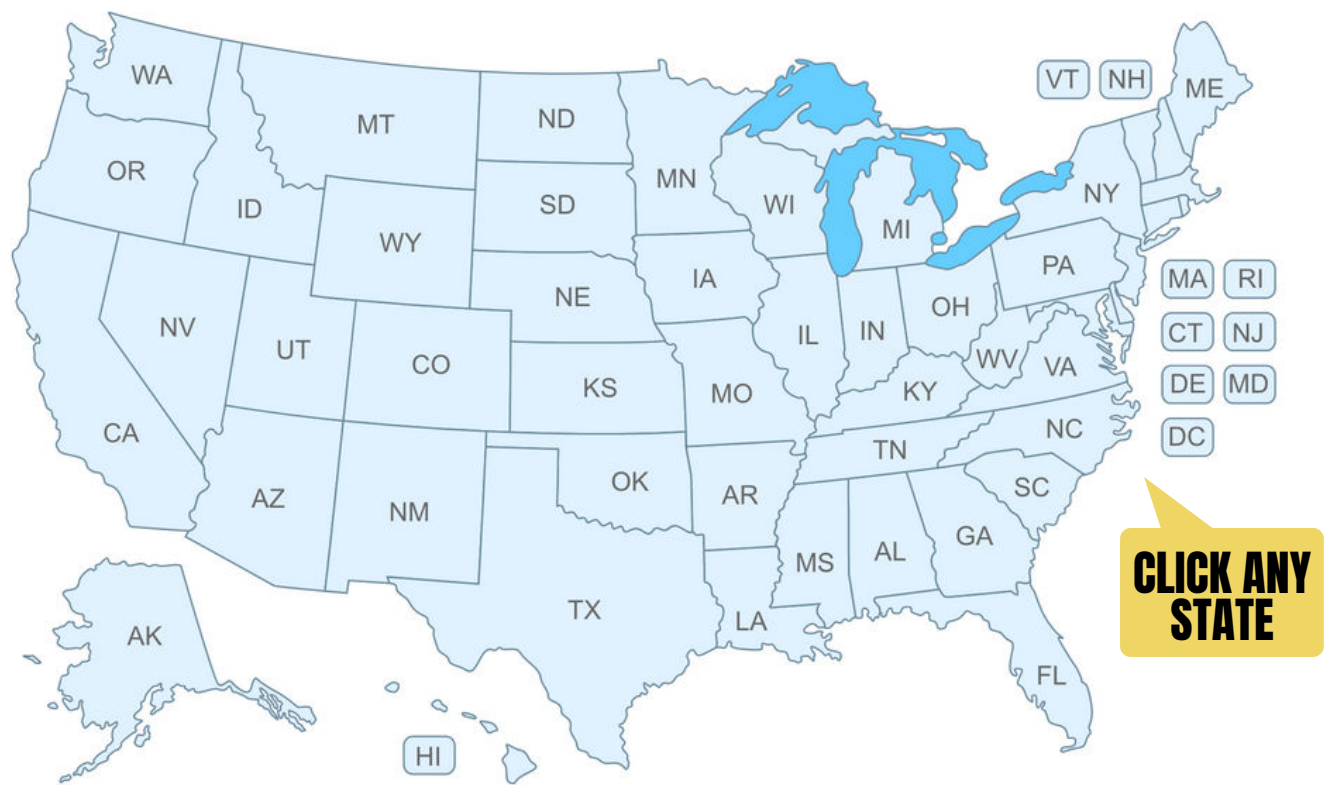
So what kind of tools are we talking about? Turn the page to learn about two of the newest and most exciting tools ever to hit the recovery industry.



“*There is a great satisfaction in building good tools for other people to use.*”  
— Freeman Dyson



# YOUR NEW STATE RESOURCES TOOL



Talk to anyone trying to build recovery housing and the subject will sooner or later turn to funding. The fact is that when it comes to recovery programs, good intentions almost always outweigh available funding.

With that challenge in mind, the Fletcher Group partnered with Allen Smart, founder of *Philanthropy-worx*, to create a new State Resources Tool focused on rural communities. You can access the tool through the Top Menu of our website or by going directly to our [State Resources Landing Page](#).

There you'll see the blue U.S. map at the top of this page. Click on any state and you'll be taken to a dedicated web page where many of that state's potential funders of rural recovery efforts are listed.

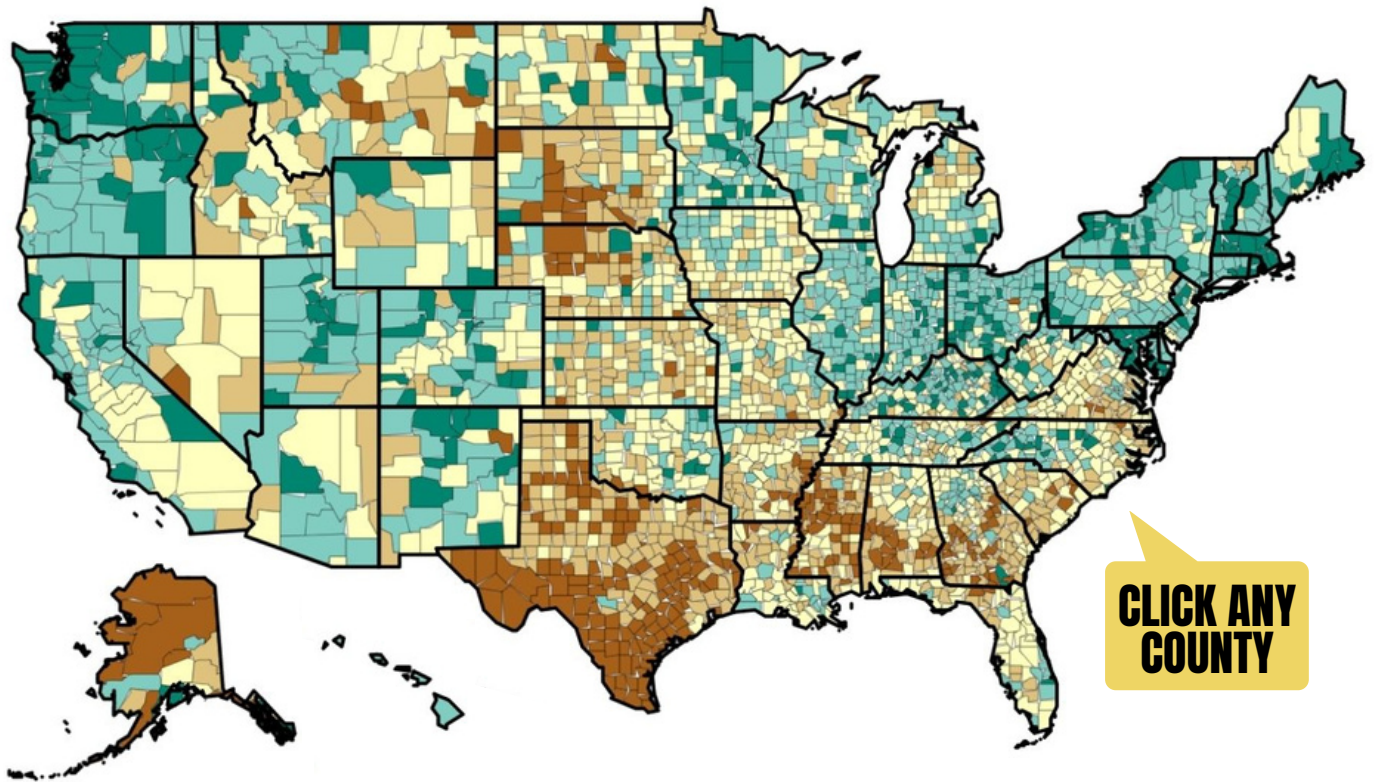
- The following information appears for each funder:
- The region or regions in which the foundation operates
  - The issues the foundation tends to support
  - A brief description of the foundation's grant application process
  - The approximate dollar amount the foundation expends in grant-making each year
  - An example of a recovery housing facility previously funded by the foundation

**Opioid Settlement Funds**  
Each state resources page also includes a description of opioid settlement funds that may become available.

It should be noted, however, that some states have chosen not to participate in the national opioid settlement and are instead pursuing legal action independently. In that case, fund seekers will need to inquire on their own with state authorities.

One other important resource can be accessed from the bottom of each state resources page: A link to the exciting new County Assessment Tool described on the next page of this newsletter.

# YOUR NEW COUNTY ASSESSMENT TOOL



A wealth of knowledge regarding your county's recovery environment is now just a click away, thanks to the new Rural Recovery Ecosystem Index developed through a Fletcher Group Rural Center Of Excellence partnership with researchers at East Tennessee State University and NORC at the University of Chicago.

With a simple click on the map pictured above, the nation's first interactive data visualization tool gives users a detailed snapshot of the recovery ecosystem in every U.S. county.

Two key contributors to the new tool, Michael Meit and Megan Hefferman, recently demonstrated the exciting new tool at the Fletcher Group's October 6 webinar. They showed, for example, how the tool integrates overdose mortality rates with data on poverty, education and other demographic factors, allowing users to compare county-level information to the rest of their state and the nation. The tool also allows community organizations, policymakers, researchers, substance use treatment providers, decision-makers and the general public to explore county-level maps and create data dashboards to understand where additional recovery resources are most needed. Insights derived from the tool can be used to enhance recovery ecosystems by identifying and targeting local resources and interventions.

"This is a real game-changer for recovery allies all across the country," says Fletcher Group Founder and Chief Medical Officer Dr. Ernie Fletcher. "Instant access to highly detailed information will help them work much more efficiently and effectively. That's especially important because recovery ecosystems involve so many moving parts and rely so heavily on local resources. Recovery housing is the logical first step—that's why we're so dedicated to it—but many other resources and services must be in place as well. Having a quick, accurate, and detailed snapshot of what's available—and what's missing—will be a godsend, especially in the rural communities we serve."