



THE
**FLETCHER
GROUP**
RURAL CENTER OF EXCELLENCE



TA CATEGORIES

- Recovery Housing Development
- Blended Funding
- Criminal Justice Diversion
- Case Management
- Community and Stakeholder Development
- Opioid Response
- Peer-Driven Support
- Community-Based Care
- Medication-Assisted Treatment
- Mental Health Treatment
- Trauma-Informed Care
- Neonatal Abstinence Syndrome
- Outcome Documentation
- Payment Methodologies
- Workforce Training
- Social Enterprise
- TeleHealth
- Technology Development

OUR HISTORY

The Technical Assistance provided by the Fletcher Group Rural Center Of Excellence originated when Ernie Fletcher, then Governor of Kentucky, launched the innovative and highly successful Recovery Kentucky program of recovery residences. Called a model “Evidence-Based Program” by SAMHSA, its 17 facilities have since helped thousands of Kentuckians rebuild their lives while saving millions in taxpayer dollars.

OUR HRSA FUNDING

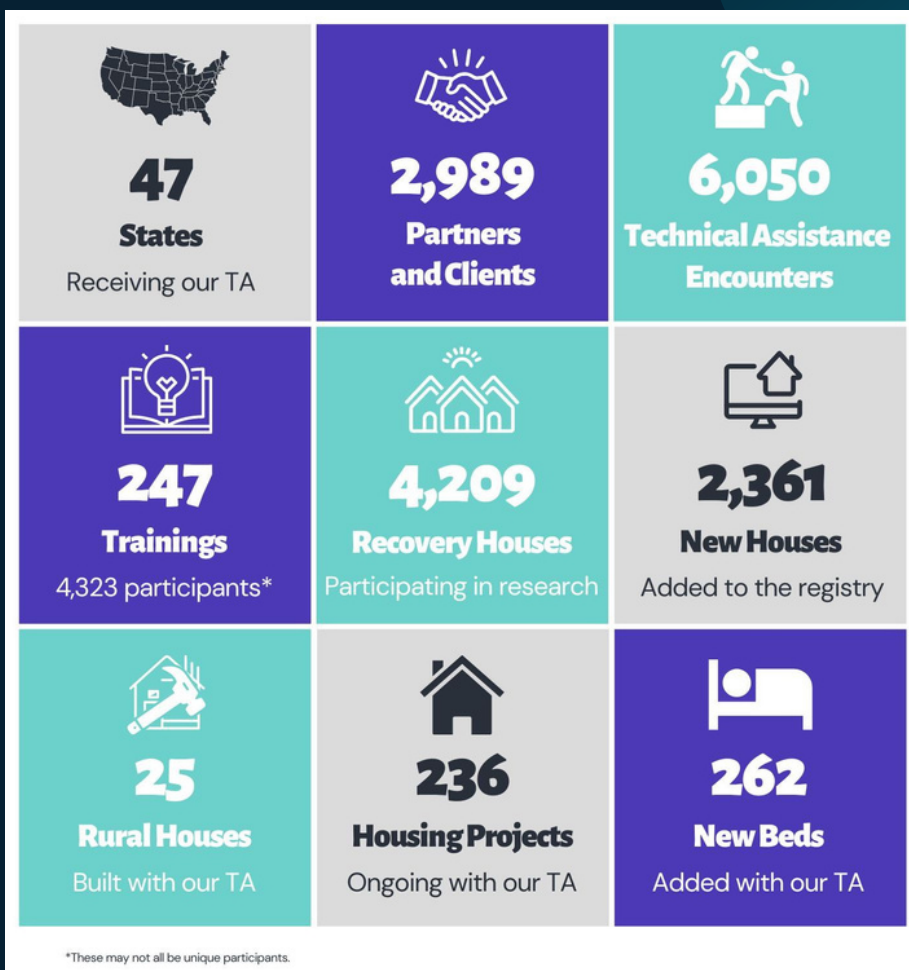
The Fletcher Group Rural Center Of Excellence has received \$17.1 million in grants from the Health Resources and Services Administration (HRSA), an agency of the U.S. Department of Health and Human Services (HHS). In line with HRSA's commitment to the geographically isolated and economically or medically vulnerable, the Fletcher Group RCOE provides technical assistance and training, conducts original research, and informs public policy to expand both the quality and capacity of recovery housing and recovery services throughout rural America.

HOW WE MAKE A DIFFERENCE

To achieve its goal of promoting the quality and capacity of Rural Recovery Housing with evidence-based Technical Assistance, the Fletcher Group RCOE facilitates:

- **Stakeholder Engagement** that brings together law enforcement, court personnel, social services, health services, housing, faith-based entities, political leaders, and others to address Substance Use Disorder/Opioid Use Disorder (SUD/OD) issues and support Recovery Housing (RH).
- **Program Development** that addresses capital development and the acquisition of RH facilities (either building them from the ground up or repurposing existing buildings) by providing an operational model and developing the partnerships needed to make RH a reality.
- **Financial Modeling**, including pro forma development and braided funding to cover capital development and daily operating costs.
- **Program Operations** including a “Playbook,” policies and procedures, hiring guidance, job descriptions, training, quality assurance, certification standards, documentation requirements, medications, and social recovery model best practices.
- **Program Focus** on the men, women, families, pregnant and parenting women (including those dealing with Neonatal Abstinence Syndrome) and people experiencing homelessness or involved with the criminal justice system.
- **Technology and Data Management**, including resident management systems, tracking, outcome evaluations, and outcome documentation.
- **Research** that informs public policy and assists in the development of evidence-based best practices.

OUR IMPACT IN 2022



fletchergroup.org