



Fletcher Group Partner Success Story

LIVED EXPERIENCE PAYS

PAGE 1

SEEING PEOPLE AS PEOPLE

With a staff of over 15, all in long-term recovery, WVCORR in Romney, West Virginia is a testament to the wide-ranging benefits of lived experience. "It gives me the empathy to see people as people, not just as a sum of their mistakes or their addiction," says Executive Director Misty Stambler. "It also gives people hope," says Employment Navigator Rebecca Conrad, "when we tell them we've been there, we know what you're going through, and you can make it just like us."



HUMBLE BEGINNINGS

WVCORR began ten years ago as a drop-in recovery center providing 12-step meetings and case management assistance. With the addition of Hampshire County Pathways, a small men's recovery center, the non-profit began offering a food pantry, laundry services, internet access, and free daily lunches to community members as well as residents. The non-profit has since grown to include three recovery homes: the 12-bed Hampshire Lighthouse for women, the 6-bed Monarch House for pregnant and parenting mothers, and the 10-bed Phoenix House for men.

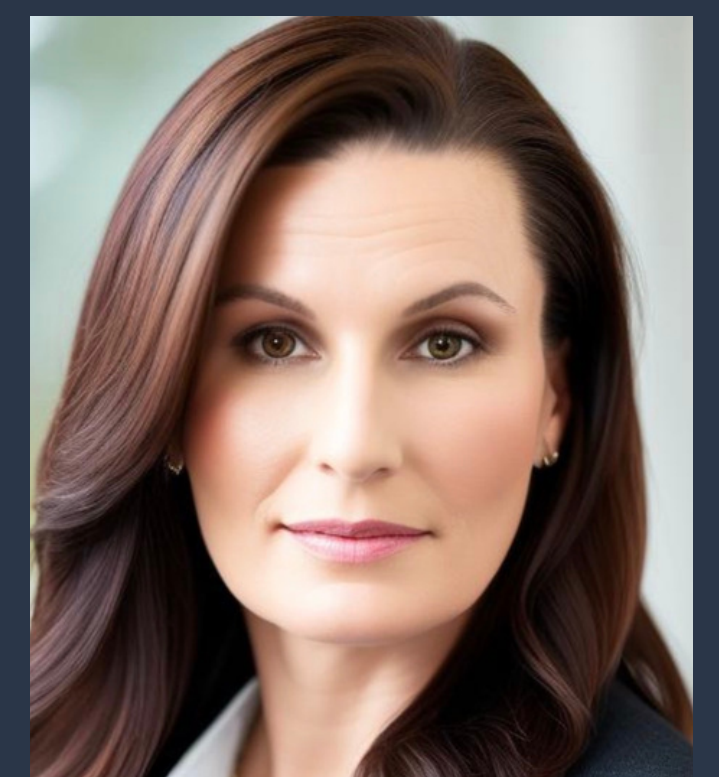
IMPRESSIVE GROWTH

More recently, WVCORR became a Licensed Behavioral Health Center, allowing them to bill Medicare and insurance for the peer support services they provide. But that's just one small piece of a new employment and social enterprise program that funds—through partnerships with West Virginia's Division of Rehabilitation Services, Workforce West Virginia and others—paid on-the-job training for peer mentors and recovery coaches towards Peer Recovery Support Specialist (PRSS) certification, job placement, and meaningful careers that will benefit countless others.

THE BEST IS YET TO COME

WVCORR's dynamic and diverse staff has set its sights on a new goal: an all-inclusive, multi-building campus similar to a Recovery Kentucky campus they visited with the Fletcher Group's help.

"We'll have different levels of housing, including reunification homes where families that have been separated can reunite, heal, and prepare for the next step," says Rebecca Conrad. "A campus like that will provide the complete continuum of care needed for everyone, from detox to reunification."





Fletcher Group Partner Success Story

LIVED EXPERIENCE PAYS

PAGE 2

MAKING CONNECTIONS

Misty Stambler and her staff first made contact with the Fletcher Group through the West Virginia affiliate of the National Alliance for Recovery Residences. At the Fletcher Group's 2022 national conference in Memphis, Tennessee they were profoundly impressed by Outreach Director Tony White's presentation of the Recovery Kentucky peer support model. After seeing the model in action at the Genesis Recovery Kentucky Center in Grayson, Kentucky, they signed up their entire staff to be trained by Tony in weekly online sessions that continued for three months. "I'm so grateful for that because it changed so many things for us," says Misty Stambler.

INSTANT IMPACT

Tony White's training had multiple effects. "We had heard a little bit about the social model," says Misty, "but for some staff it was brand new. We essentially rewrote our policies and procedures and soon launched our own peer mentor and employment programs. It was a lot to take on, but we knew after visiting Genesis and meeting people face-to-face that we were in good hands." WVCORR Employment Navigator Rebecca Conrad goes so far as to say, "I owe my ability to work with so many different agencies and implement so many different things to the Fletcher Group. I probably wouldn't even be here without them."

IT GOES BOTH WAYS

"Misty's so eager to learn and start new things that she found new funding sources on her own that I can now share with others," says Kristin Tiedeman, the Fletcher Group's Outreach and Engagement Specialist working with WVCORR.

Lori Baier, the Fletcher Group's Director of Employment Services, also contributed. "Lori was a huge part of the employment pilot," says Rebecca Conrad. "I wouldn't be able to do what I'm doing without her. Tony, Kristin, and Lori are all so knowledgeable, so quick to respond, and their follow-up is incredible. I just love working with the Fletcher Group. They're awesome!"

WE ARE RECOVERY

"Recovery isn't just the absence of substances; it's the connection of community," says Executive Director Misty Stambler. "That's why—to me—the Fletcher Group is recovery. They live by the same values and recovery principles we do. The only difference is they do it on a national level, for the benefit of organizations like ours, while we do it on a local level, for the benefit of individuals in our community. Without Kristin (below) and others at the Fletcher Group, we just wouldn't be where we are today."

