

Rural Considerations in Deflection

**The Fletcher Group
Virtual Presentation
October 2025**

Jac Charlier, Executive Director, TASC's Center for Health and Justice (CHJ)

Guy Farina, Senior Program Manager, TASC's Center for Health and Justice (CHJ)

Sydney Goggins, Program Manager, TASC's Center for Health and Justice (CHJ)

Today's Agenda

- 1) Introductions
 - 1) TASC's Center for Health and Justice (CHJ)
 - 2) BJA National COSSUP TA Center
 - 3) PTACC
- 2) Deflection, defined
- 3) Rural considerations in deflection
- 4) Questions and discussion

Learning Objectives

As a result of this webinar, participants will be able to:

- 1) Define deflection
- 2) State the difference between deflection and diversion
- 3) Understand how deflection fits in with prevention and diversion
- 4) State 5 challenges for rural deflection

Opportunities to Join the National and Global Deflection Conversation!



CENTER FOR
HEALTH & JUSTICE
AT TASC

PTACC – The National Voice of the Field

- **Guidance to the field** – 6 Pathways of Deflection, Definition of Deflection, Deflection Visuals, Model Legislation, 1-Pagers on a range of topics, Youth Deflection, Veterans Deflection, etc...
- **National Deflection Week** – The 3rd full week in July - for 2026: 19-25 July
- **Standards and Accreditation**
- **PTACC Ticker** – Weekly field-wide newsletter (www.ptaccollaborative.org)
- **Connecting the field** – Affiliate (ALC), National Leadership Councils (NLC), Executive Leadership Council (ELC), and International Leadership Council (ILC) – *If you are in the field, you are part of PTACC*
- **State LEaders Deflection (SLED) Policy Network** – National Policy Brief for State Leaders – *Success in Deflection; Peers and Deflection; Medicaid and Deflection; US National Deflection Inventory*

www.ptaccollaborative.org



Deflection at 10: Where We've Been and Where We're Going

PTACC 2025

International Deflection & Pre-Arrest Diversion Summit

NEW ORLEANS, LA | DECEMBER 2-4, 2025

REGISTRATION OPEN!



2025 PTACC Summit: Celebrating the 10th Anniversary of Deflection

2025 SUMMIT THEMES

- o First Responder Wellness and Support
- o Research, Evaluation, Data, and AI
- o Specialized Deflection Outreach, such as Youth Deflection and Veterans Deflection
- o Legislation and policy (national, state, regional, and local)



ptaccollaborative.org

PTACC Field-Wide Resources

DOWNLOAD THE PTACC ONE-PAGER

[PTACC One-pager](#)

DOWNLOAD THE PTACC UNDERSTANDING DEFLECTION AND DIVERSION PRIMER (PDF POWERPOINT)

[Understanding Deflection and Diversion Primer \(April 2025\)](#)

DOWNLOAD THE 2025 NATIONAL DEFLECTION WEEK GUIDE

[Click Here to Download Guide](#)

DOWNLOAD NOW: PTACC SUITE OF DEFLECTION AND PRE-ARREST DIVERSION RESOURCES

[PTACC Youth Deflection](#)

[PTACC 6 Pathways of Deflection Visual](#)

[PTACC 6 Pathways of Deflection One-Pager](#)

[PTACC Key Deflection Research Takeaways](#)

[PTACC Opioid Settlement Funding for Deflection](#)

[BJA National Deflection Site Survey](#)

DOWNLOAD THE STATE LEADERS' DEFLECTION (SLED) POLICY BRIEF SERIES

[Success in Deflection Programs: A Policy Brief August 2025](#)



The Inaugural Deflection Challenge Coin Available field-wide, issued 2024

Inaugural PTACC Challenge Coin



Deflection: An Effective Public Safety and Public Health Strategy



Deflection:

Improves public safety by referring people with unmet substance-use disorders and behavioral health needs as early as possible into community-based support, services, and treatment, and away from arrest and prosecution.

Deflection may involve first responders (police, law enforcement, EMS, and fire), second responders, alternate responders, community-based stakeholders (people with lived experience, peers, clinicians, family members, crime survivors), prosecutors, and defense lawyers.

Deflection Community-Based

Diversion aka Justice System Legal-Based

ADDRESSES CAUSES OF BEHAVIOR

Filing
Decision

DETERMINES GUILT

0
Community

1
Law Enforcement

- ✓ Pre-/Post-Arrest
- ✓ Pre-/Post-Booking
- ✓ Pre-Filing

2
Prosecutor

3
Jails/
Courts

4
Reentry

5
Probation/
Parole

Interventions along the Sequential Intercept Map

Deflection Community-Based

Community-based systems and services

May or may not involve arrest

Services do not depend on involvement in the justice system

Addresses underlying causes of unlawful conduct driven by behavioral health challenges

Always ✓ Pre-Filing

Justice System Legal-Based

Takes place in the justice system and requires lawyers

Involves jail booking and/or filing charge

Services are made available through involvement in the justice system

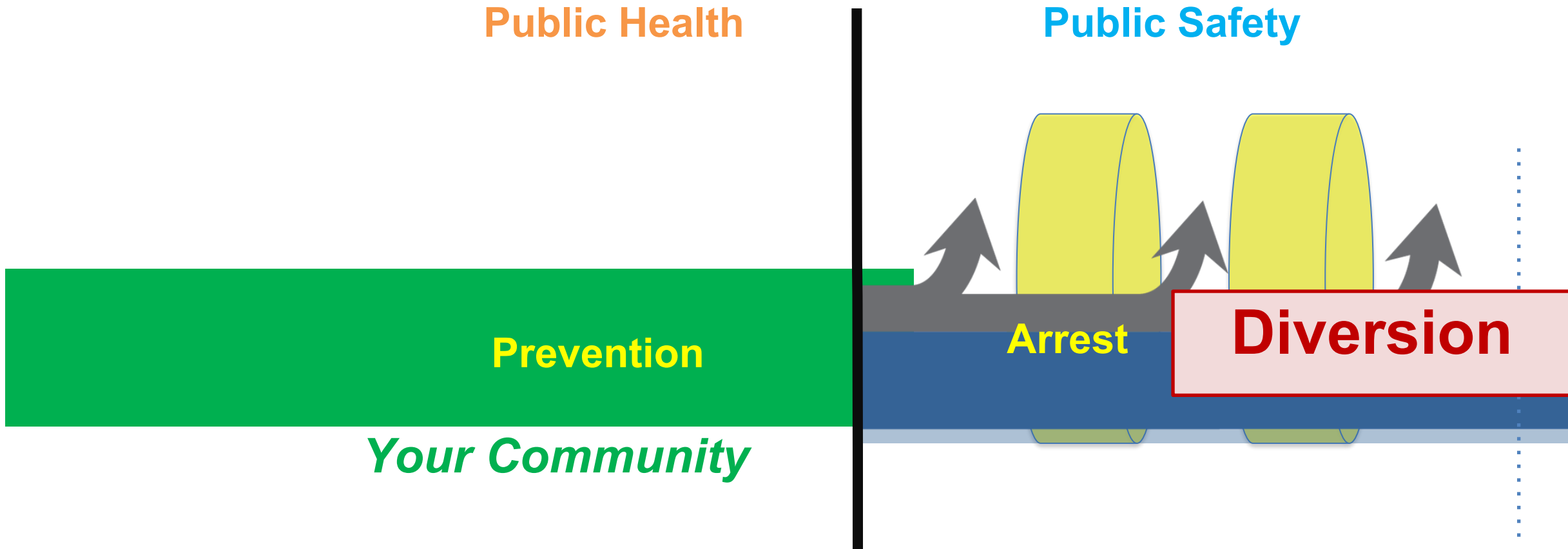
May not address underlying causes, can generate adverse collateral consequences

THE DEFLECTION BRIDGE



CENTER FOR
HEALTH & JUSTICE
AT TASC

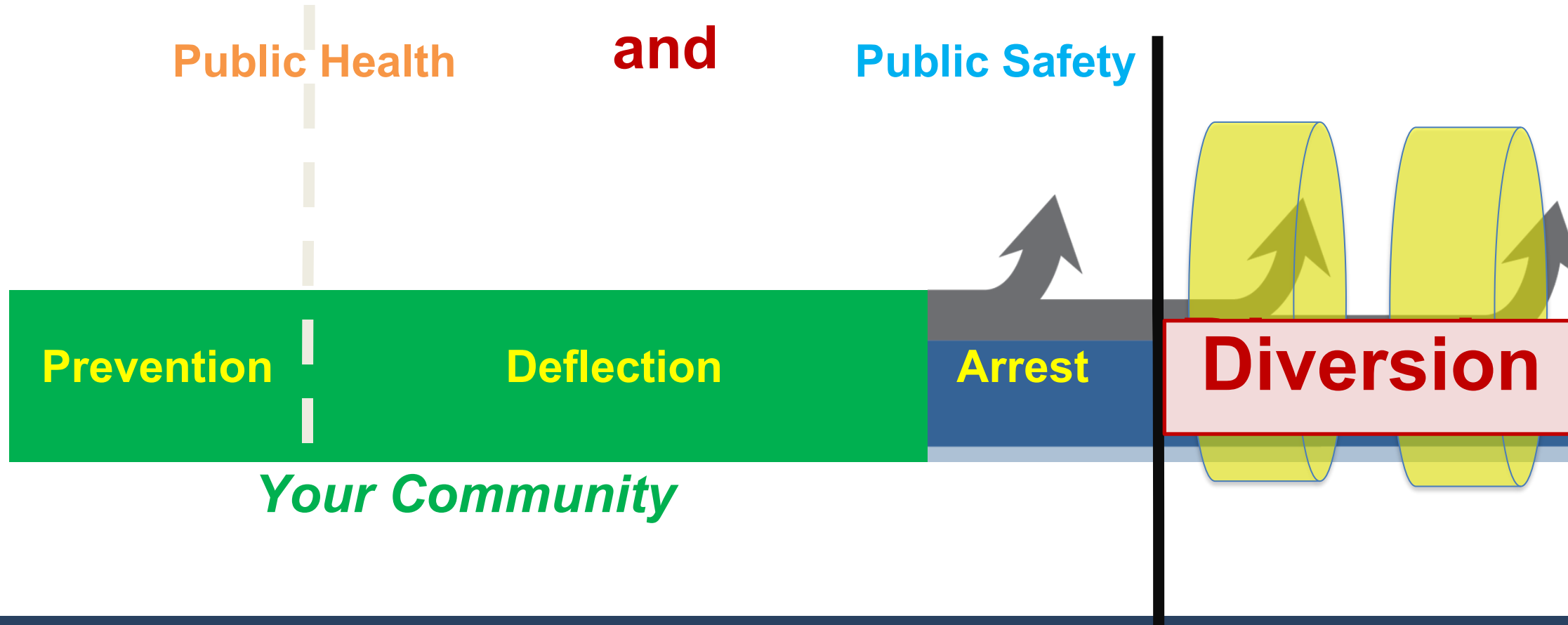
Before Deflection: How We Understood Prevention, Arrest, and Diversion



CENTER FOR
HEALTH & JUSTICE
AT TASC

X@Tasc_CHJ

After Deflection: Revealing a Space and Place That's Been There, But Until Now Unseen



Deflection Creates a Bridge Connecting

Law Enforcement and Treatment



**The 6 Deflection Pathways
Create On and Off Ramps**



CENTER FOR
HEALTH & JUSTICE
AT TASC

X@Tasc_CHJ

Deflection Creates New Opportunities to Reduce Drug Use and Drug-Related Crime



Deflection Leads to Recovery from Drug Use



CENTER FOR
HEALTH & JUSTICE
AT TASC

X@Tasc_CHJ

Deflection Creates New Opportunities to Reduce Drug Use and Drug-Related Crime



The Deflection Bridge

THE 6 DEFLECTION PATHWAYS



CENTER FOR
HEALTH & JUSTICE
AT TASC

6 Pathways

- Self-Referral
- Active Outreach
- Naloxone Plus (post-overdose)
- First Responder and Officer Referral
- Officer Intervention (law enforcement only)
- Community Response



The Six Pathways

Self-Referral

- An individual voluntarily initiates contact with a first responder agency (law enforcement, fire services, or EMS) for treatment referral. If the contact is initiated with a law enforcement agency, the individual makes the contact without fear of arrest.
- Can be a PD, FD (Safe stations), Hospital, Community center... (Warm Handoff – face to face/in person)
- Online, Phone call... (Cold Handoff)



The Six Pathways

First Responder and Officer Referral

- As a preventative measure, during routine activities such as patrol or response to a service call, a first responder engages individuals and provides a referral to treatment or to a case manager.
- Note: if law enforcement is the first responder, no charges are filed or arrests made.

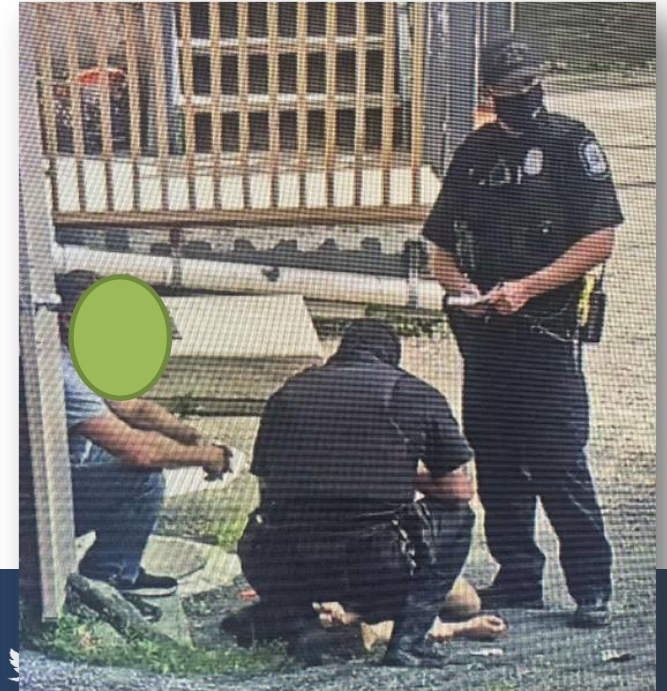


The Six Pathways

Naloxone Plus (Post Overdose)

“Plus” refers to the connection to treatment following OD reversal

- A first responder and program partner (often a clinician or peer with lived experience) conducts outreach specifically to individuals who have experienced a recent overdose to engage them in and provide linkages to treatment.
- Time frame – immediate to 72 hours
(On scene, at the hospital, or at home)



The Six Pathways

Active Outreach

- A first responder intentionally identifies or seeks out individuals to refer them to or engage them in treatment; outreach is often conducted by a team consisting of a clinician and/or a peer with lived experience.
- Addressing high utilizers, those at high risk, or as a preventative strategy when they are able to be pre-identified
- Proactive approach for connecting people to treatment and services



Officer Intervention Pathway

Definition: Law enforcement initiates treatment engagement from a call for service or “on view”; charges are held in abeyance or citations issued, with a requirement for completion of treatment

Brand Name:

“Civil Citation Network” CCN (multiple sites, adult and juvenile)

Began Tallahassee, FL

LEAD

Best Use:

➤ **Providing a tool for officers on patrol to respond to addiction and mental health when charges are present**

****This pathway requires the involvement of the District Attorney or State’s Attorney**



CENTER FOR
HEALTH & JUSTICE
AT TASC

 **@TASC_CHJ**

Community Response

- In response to a call for service, a team comprising community-based behavioral health professionals engages individuals to **help de-escalate crises, mediate low-level conflicts, or address quality-of-life issues** by providing a referral to treatment, services, or a case manager
- Team members could include
 - Crisis workers
 - Clinicians
 - Peer specialists
 - Individuals with lived experience, sometimes in partnership with medical professionals,
 - And/or other credible messengers



RURAL DEFLECTION CONSIDERATIONS



CENTER FOR
HEALTH & JUSTICE
AT TASC

Five Key Considerations for Rural Deflection

1. Access to Treatment and Follow-up Care
2. Overcoming Stigma
3. Operational Challenges
4. Workforce Challenges
5. Funding



Access to Treatment and Follow-up Care

Treatment service locations

Understanding of the community landscape

Transportation



CENTER FOR
HEALTH & JUSTICE
AT TASC

X@Tasc_CHJ

Overcoming Stigma

Lack of anonymity

Lack of awareness about treatment options

Lack of education about alternatives to incarceration and arrest

First responder perspectives



Operational Challenges

Capacity within organizations

Importance of planning

Cooperation

Experience working with other organizations (their neighbors)



Workforce Solutions

Incentives

**Volunteers or
Interns**

**Flexible
qualifications and
job descriptions**

Virtual services

**Contractors or
part-time workers**

**Regional
partnerships**



Funding

Small and lean budgets

Grants

Creativity

Combining multiple grants and income sources

Importance of data tracking



CENTER FOR
HEALTH & JUSTICE
AT TASC

X@Tasc_CHJ

Conclusion

- Deflection 101
- Rural Deflection Considerations

Reminder.....

- PTACC 2025 Registration is OPEN!



Thank you! Questions?



CENTER FOR
HEALTH & JUSTICE
AT TASC

Jac A. Charlier, M.P.A.

Executive Director

Email: jcharlier@tasc.org

Guy Farina

Deflection Senior Program Manager

Email: gfarina@tasc.org

Sydney Goggins, J.D.

Deflection Program Manager

Email: sgoggins@tasc.org



This presentation is supported by the Health Resources and Services Administration (HRSA) of the U.S. Department of Health and Human Services (HHS) as part of an award totaling \$3.3 million with 0% financed with non-governmental sources. The contents are those of the author(s) and do not necessarily represent the official views of, nor an endorsement, by HRSA, HHS, or the U.S. Government.

